

# ARK™ Methotrexate II Assay

The ARK™ Methotrexate II Assay is a homogeneous enzyme immunoassay for the quantitative determination of methotrexate in human serum or plasma on automated clinical chemistry analyzers. The measurements obtained are used in monitoring levels of methotrexate to help ensure appropriate therapy.

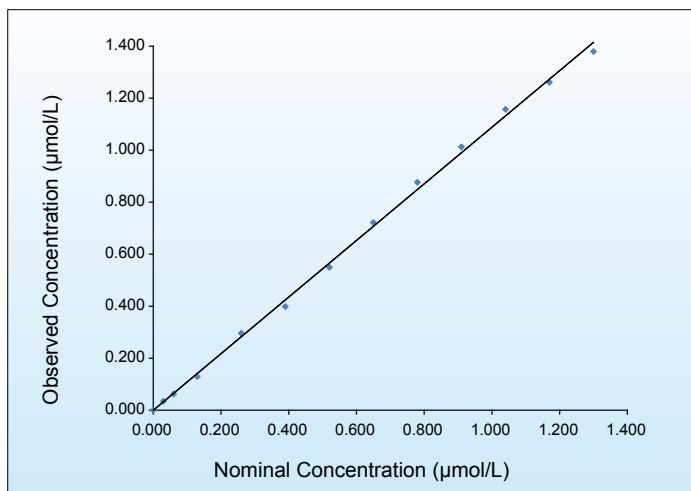


## KEY POINTS

- Improved sensitivity, precision, linearity, and stability
- Expanded assay range
- Lower cross-reactivity to 7-hydroxymethotrexate ( $\leq 0.01\%$ )
- Homogenous enzyme immunoassay
- Applicable to many automated clinical chemistry analyzers
- Convenient, liquid-stable, ready-to-use

*Next Generation Assays*

## LINEARITY



ARK™ Methotrexate II Assay Measurement Range: 0.030 - 1.300 µmol/L. Specimens containing methotrexate in higher concentrations (>1.300 µmol/L) are assayed by dilution of the specimen into the measurement range.

## ACCURACY

Target (µmol/L)	Mean (µmol/L)	SD	CV (%)	Recovery (%)
0.060	0.063	0.002	3.14	104.4
0.100	0.105	0.002	1.74	105.2
0.300	0.322	0.005	1.48	107.2
0.600	0.628	0.007	1.12	104.7
1.000	1.079	0.047	4.33	107.9
1.200	1.293	0.053	4.06	107.8

## PRECISION

Calibration Range Control Levels							
Sample	N	Mean (µmol/L)	Within Run SD	Within Run CV (%)	Between Day SD	Between Day CV (%)	Total (Within Lab)
Control Low	160	0.069	0.002	2.84	0.001	1.23	0.002
Control Mid	160	0.411	0.006	1.40	0.002	0.43	0.006
Control High	160	0.811	0.014	1.79	0.008	0.97	0.017
Serum Low	160	0.070	0.002	2.50	0.001	1.49	0.002
Serum Mid	160	0.404	0.008	1.86	0.003	0.65	0.008
Serum High	160	0.846	0.016	1.93	0.008	0.95	0.017

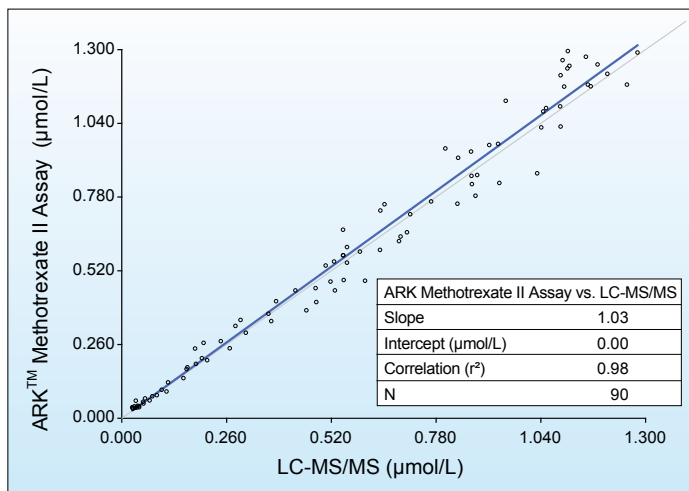
High Range Control Levels							
Sample	N	Mean (µmol/L)	Within Run SD	Within Run CV (%)	Between Day SD	Between Day CV (%)	Total (Within Lab)
Control 5	160	4.868	0.070	1.44	0.036	0.74	0.077
Control 50	160	49.660	1.108	2.23	0.397	0.80	1.141
Control 500	160	493.769	8.012	1.62	2.483	0.50	8.012
Serum 5	160	5.247	0.076	1.45	0.028	0.54	0.078
Serum 50	160	51.614	0.723	1.40	0.285	0.55	0.777
Serum 500	160	507.988	7.632	1.50	4.240	0.83	8.538

Precision was performed according to (CLSI) Protocol EP5-A3.

## LIMIT OF BLANK, LIMIT OF DETECTION, AND LOWER LIMIT OF QUANTITATION

Limit of Blank: 0.000 µmol/L  
 Limit of Detection: 0.004 µmol/L  
 Limit of Quantitation: 0.030 µmol/L

## METHOD COMPARISON



## SAFETY AND STABILITY

### Reagent on-board stability

Up to at least 60 days

### Shelf Life of Reagents, Calibrators, Controls, and Dilution Buffer

18 months from date of manufacturing

### Safety

Nonhazardous preservatives  
 Contains sodium azide ≤0.09%

## PROFICIENCY SAMPLES

CAP Survey		
Sample ID	Consensus Mean (µmol/L)	ARK Value (µmol/L)
CHM-06 (2022)	8.003	7.253
CHM-07 (2022)	0.209	0.218
CHM-08 (2022)	2.161	2.347
CHM-09 (2022)	9.838	9.393
CHM-10 (2022)	0.278	0.311

## ORDERING INFORMATION

ARK™ Methotrexate II Assay (R1 x 16 mL / R2 x 8 mL)	5071-0001-00
ARK™ Methotrexate II Assay (R1 x 28 mL / R2 x 14 mL)	5071-0001-01
ARK™ Methotrexate II Calibrators (6 x 4 mL)	5071-0002-00
ARK™ Methotrexate II Controls (3 x 4 mL; LOW, MID, HIGH / 3 x 2 mL; 5, 50, 500 µmol/L)	5071-0003-00
ARK™ Methotrexate II Controls (3 x 4 mL; LOW, MID, HIGH)	5071-0003-01
ARK™ Methotrexate II Controls (3 x 2 mL; 5, 50, 500 µmol/L)	5071-0003-02
ARK™ Methotrexate II Dilution Buffer (25 mL)	5071-0004-00

### ARK Diagnostics, Inc.

48089 Fremont Boulevard  
 Fremont, CA 94538  
 Tel: 510-270-6270 Fax: 510-270-6298

### For Customer Support:

Call toll free: 877-869-2320  
 customersupport@ark-tdm.com  
[www.ark-tdm.com](http://www.ark-tdm.com)