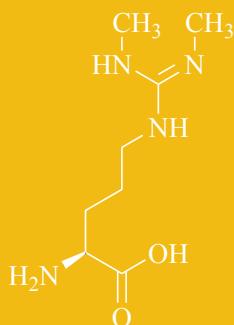




rem**ARK**ably better.



## ARK™ SDMA ASSAY

The ARK SDMA Assay is a homogeneous immunoassay intended for the quantitative determination of SDMA in canine and feline serum. The assay is designed for use in laboratories with automated clinical chemistry analyzers.

### KEY POINTS

- ☼ Convenient, liquid-stable, ready-to-use homogeneous enzyme immunoassay
- ☼ Applicable to many automated clinical chemistry analyzers
- ☼ Linear range from 2.5 – 100 µg/dL
- ☼ Calibration stability up to at least 14 days
- ☼ Nonhazardous preservatives
- ☼ Excellent correlation to LC-MS/MS
- ☼ ARK patented technology



**ARK Diagnostics, Inc.**  
48089 Fremont Boulevard  
Fremont, CA 94538  
Tel: 510-270-6270 Fax: 510-270-6298

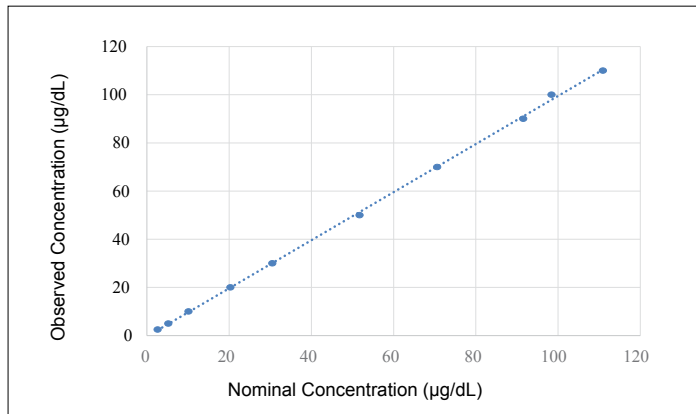
**For Sales Inquiries:**  
Call toll free: 877-869-2320  
sales@ark-tdm.com  
[www.ark-tdm.com](http://www.ark-tdm.com)

## PRECISION

Sample (µg/dL)	N	Mean (µg/dL)	Within Run		Between Day		Total	
			SD	CV (%)	SD	CV (%)	SD	CV (%)
10	40	10.6	0.63	6.3	0.47	4.4	0.72	7.2
14	40	14.2	0.75	5.3	0.46	3.3	0.82	5.8
20	40	20.5	0.57	2.9	0.65	3.2	0.88	4.4
60	40	60.9	1.60	2.7	1.39	2.3	1.97	3.3

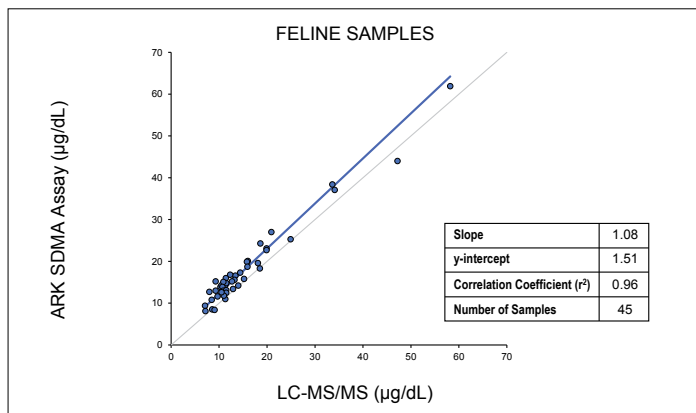
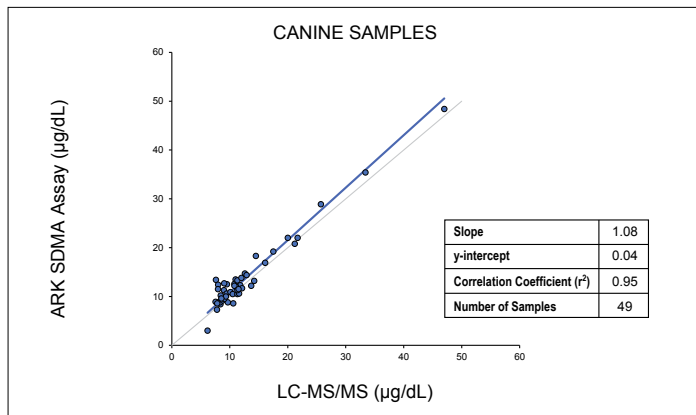
Quad-level controls containing SDMA were used in the study. Each level was assayed in quadruplicate twice a day for 5 days.

## LINEARITY



ARK SDMA Assay Measurement Range: 2.5 - 100 µg/dL. Specimens containing SDMA in higher concentrations (>100 µg/dL) are assayed by dilution of the specimen into the measurement range.

## METHOD COMPARISON



## SPECIFICITY

Compound	Concentration Tested (µg/dL)	Mean (µg/dL)	Cross-reactivity (%)
ADMA	1000	3.6	0.4
L-Arginine	1000	0.8	0.1
MMA	1000	46.8	4.7
Nα-acetyl-dimethylarginine	1000	29.8	3.0

## SAFETY AND STABILITY

### Reagent On-board Stability

Up to at least 60 days

### Typical Shelf Life of Reagents, Calibrators, and Controls

9-12 months from shipping date

### Safety

Nonhazardous preservatives

Contains sodium azide ≤ 0.09%

Results shown are typical and may vary among laboratory analyzers.

## ORDERING INFORMATION

ARK™ SDMA Assay	5085-0001-01	4 x 28 mL R1, 4 x 14 mL R2
	5085-0001-02	4 x 115 mL R1, 4 x 58 mL R2
ARK™ SDMA Calibrator	5085-0002-00	6 x 2 mL
ARK™ SDMA Control	5085-0003-00	2 x 2 mL; Low 2 x 2 mL; High

For veterinary use only



**ARK™ SDMA Assay**

MKT26-005 Rev 01 January 2026

© 2026 ARK Diagnostics, Inc. All rights reserved  
All trademarks are property of ARK Diagnostics, Inc.